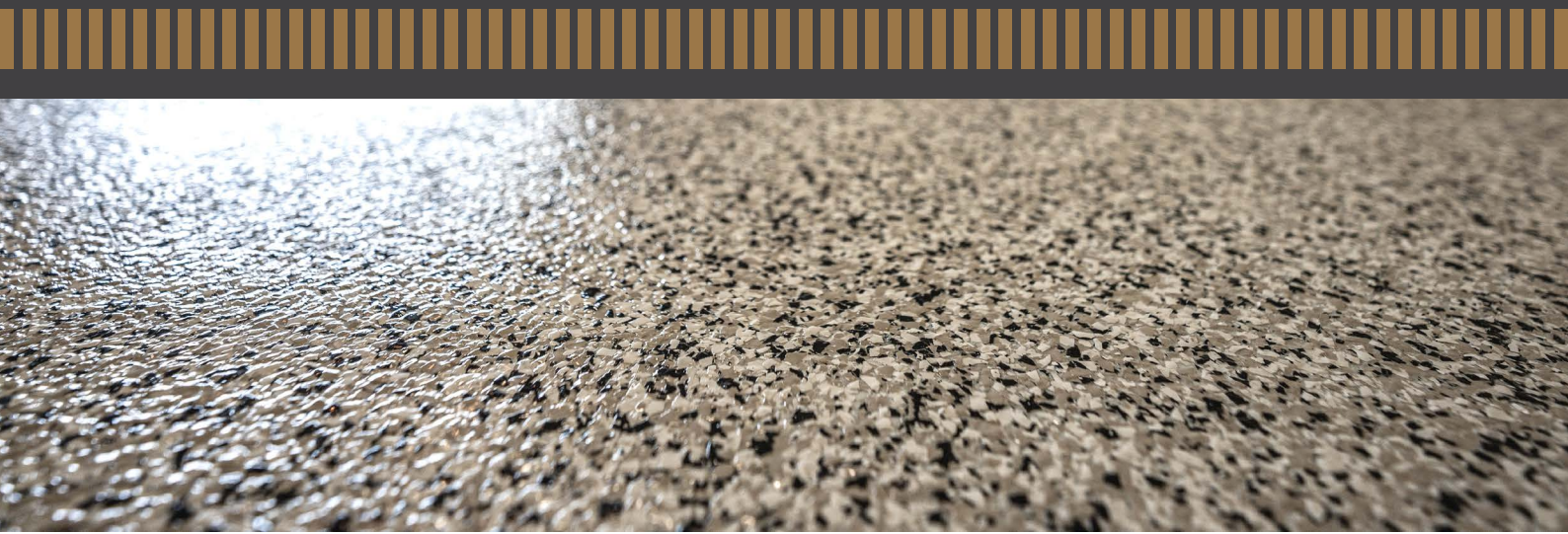


EPOFLOOR® RAPID

RAPID CURING EPOXY HARDENER



EPOFLOOR® RAPID is recommended for use where the cure times of regular EPOFLOOR® LEVELLER and EPOFLOOR® VERTICAL are too long for the application. It is suitable for use as a base layer and repair mortar.

LOW ODOUR // CURES RAPIDLY // GOOD CHEMICAL RESISTANCE // NON-FLAMMABLE

FEATURES AND BENEFITS

- Faster job turn around with base and topcoat achieved on the same day.
- High resistance to mineral acids.
- High resistance to caustic and salt solutions.
- Abrasion and impact resistant.
- High mechanical strength.
- Low odour.
- Non flammable.
- Cures rapidly.
- Seamless.

TECHNICAL PROPERTIES AT 25°C

| Testing Items | Performance |
|---------------------------|---|
| Pot Life | 15 minutes |
| Tack Free Time | 3 hours (approximately) |
| Recoat Time | 3 - 24 hours (approximately) |
| Application Temperature | 10 - 30°C |
| Cure Time | 6 hours - light foot traffic 24 hours - light mechanical traffic 7 days - full cure |
| Hardness Shore D - 7 days | 78 |

MIXING RATIOS

WHEN USED WITH **EPOFLOOR® LEVELLER**:

| | | | |
|-----------------------------------|--------|----|--------|
| Part A Resin | 14 kg | or | 8.7 L |
| Pigment weight varies with colour | 1 L | | 1 L |
| EPOFLOOR® RAPID | 3.4 kg | or | 3.40 L |

WHEN USED WITH **EPOFLOOR® VERTICAL**:

| | | | |
|-----------------------------------|--------|----|--------|
| Part A Resin | 5.5 kg | or | 4 L |
| Pigment weight varies with colour | 500 ml | | 500 ml |
| EPOFLOOR® RAPID | 1.7 kg | or | 1.7 L |

NOTE: Refer to the respective **EPOFLOOR® LEVELLER** and **EPOFLOOR® VERTICAL** technical data sheets for further information including surface preparation, environmental conditions, chemical resistance and colour.



PRODUCT DATA SHEET: EPOXY COATINGS: EPOFLOOR® RAPID

LIMITATIONS

- Minimum substrate temperature 10°C.
- Maximum substrate temperature 25°C.
- Substrate temperature must be 5°C above dew point.
- Substrate moisture less than 5%.

EPOFLOOR® RAPID may not necessarily give the same gloss levels as the conventional EPOFLOOR® LEVELLER / VERTICAL hardener so its suitability is more for base coats rather than topcoats.

However, the level of finish achieved for a topcoat with **EPOFLOOR® RAPID** may certainly be satisfactory depending on the application and also the environment under which it is applied.

PACKAGING

20 litre pail

SAFETY PRECAUTIONS

Wear appropriate personal protection equipment. Gloves, eye protection, mask and overalls should be used during mixing and application.

SHELF LIFE

12 months from date of manufacture, stored under shelter at 25°C in the original unopened container.

Field Support

Field support where provided, does not constitute supervisory responsibility. Suggestions made by **ATECH®** either verbally or in writing may be followed, modified or rejected by the owner, engineer or contractor since they and not **ATECH®** are responsible for carrying out procedures appropriate to a specific application.

Customer Responsibility

The technical information and application advice given in this publication is based on the best information available at time of print. As the information herein is of a general nature, no assumption can be made as to the products suitability for a particular use or application and no warranty as to its accuracy, reliability or completeness either expressed or implied is given other than those required by Commonwealth or State Legislation. The owner, his representative or the contractor is responsible for checking the suitability of products for their intended use.

Safety Precautions

These products may cause allergic reactions through skin contact, goggles, protective gloves and overalls must be worn. Ensure that there is adequate ventilation and avoid breathing the vapour.

Exclusion Clause

1. The information contained in this data sheet is based on many years experience and is correct to the best of our knowledge. **ATECH®** will be under no liability whatsoever whether in:
 - a) Contract or tort (including, without limitation, negligence)
 - b) Breach of statute
 - c) Any other legal or equitable obligation other than the quality of the product at the time of despatch.
2. Any queries about specification use or application should be directed to our technical service department immediately.
3. This exclusion clause does not operate to exclude any warranty that by law may not be excluded.

