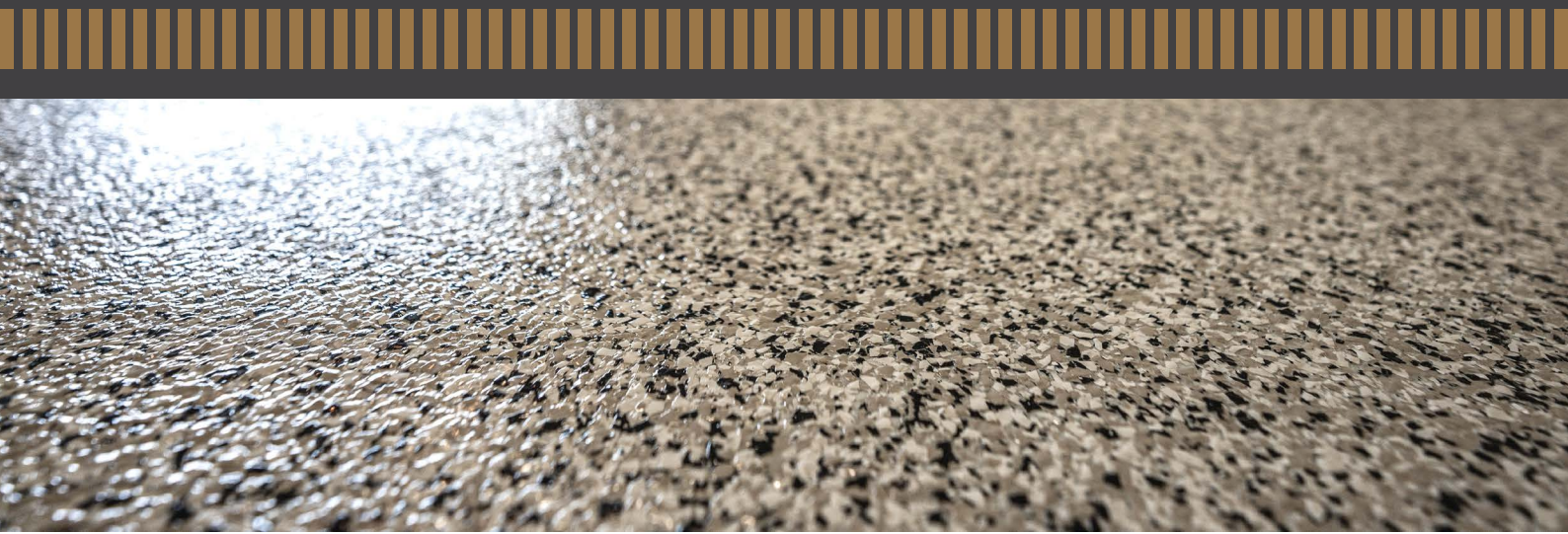


UFLOOR® INDUSTRIAL

NON-YELLOWING POLYURETHANE CLEAR COATING



UFLOOR® INDUSTRIAL is a 1-component, high solids, medium viscosity, UV stable polyurethane elastic coating. It cures using moisture in the atmosphere to produce a top coat sealer with excellent abrasion resistance. **UFLOOR® INDUSTRIAL** has excellent chemical resistance making it the ideal flexible top coat and imparts with a gloss finish.

APPLICATION GUIDELINES

SURFACE PREPARATION

Surfaces receiving an application of **UFLOOR® INDUSTRIAL** must be clean, sound, dry, and free of oils and other bond inhibiting contaminants. When applying **UFLOOR® INDUSTRIAL** to a concrete substrate, use of mechanical methods such as shot blasting, sandblasting or hydroblasting are recommended to produce a clean and lightly textured surface. When top coating a system, if the recommended recoat time is exceeded or if contamination of the substrate occurs, consult Technical Service.

MIXING

Although **UFLOOR® INDUSTRIAL** is a 1-component polyurethane product, it still requires mixing to ensure consistent curing and uniform color. Mixing is accomplished by using a jiffy paddle and low speed drill (400 to 600 rpm) and blend for 1 to 2 minutes so as not to incorporate excessive air into the product.

APPLICATION

Prior to applications, remove all sources of ignition.

TOP COAT OVER SYSTEMS

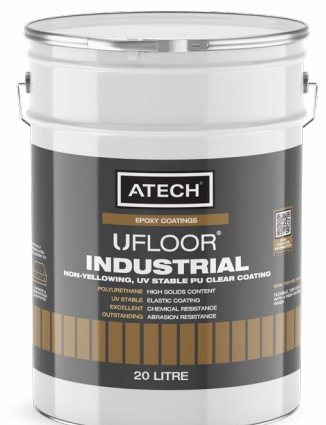
Use a high quality roller, brush or squeegee to apply a uniform film at the recommended rate. Airless spray application is also possible. Check for appropriate nozzles and pressure.

CONSUMPTION

0.40 litres per m² per coat. Wastage Excluded.

PACKAGING

4 Litres & 20 Litres.



PRODUCT DATA SHEET: EPOXY COATINGS: UFLOOR® INDUSTRIAL

Typical Properties

Solid Content	80%
Viscosity	3000 cps
Tack free time (25°C)	1 - 5 Hours
Final Cure Time (25°C)	
- Traffic	24 Hours
- Chemical	7 Days
Shore Hardness (ASTM D2240)	95 Shore A, 50 Shore D
Elongation (ASTM D412)	320%
Tensile Strength (ASTM D412)	22 MPa

LIMITATIONS

Minimum application temperature of 5°C and rising. Do not apply over damp or wet substrates. Do not apply to surfaces with active moisture vapor transmission. New concrete must cure 28 days prior to application.

SAFETY GUIDELINES

Do not use product near flame or open light.

Adequate ventilation is required during the application process.

Approved eye protection and gloves are recommended during application. Should contact occur with eyes or skin, wash thoroughly with soap and water. If irritation persists, obtain medical attention.

Consult Material Safety Data Sheet for details.

STORAGE

UFLOOR® INDUSTRIAL should be kept dry and cool. Shelf life of product stored in original containers is 12 months.

UFLOOR® INDUSTRIAL must be protected against moisture.

ATECH® believes the information herein to be true, accurate and reliable. However, recommendations or suggestions are made without guarantee. Since conditions and disposal are beyond our control, ATECH® disclaims any liability incurred in connection with the use of our products and information contained herein; no warranty, express or implied is given nor is freedom from any patent owned by ATECH®, others to be inferred.

Field Support

Field support where provided, does not constitute supervisory responsibility. Suggestions made by **ATECH®** either verbally or in writing may be followed, modified or rejected by the owner, engineer or contractor since they and not **ATECH®** are responsible for carrying out procedures appropriate to a specific application.

Customer Responsibility

The technical information and application advice given in this publication is based on the best information available at time of print. As the information herein is of a general nature, no assumption can be made as to the products suitability for a particular use or application and no warranty as to its accuracy, reliability or completeness either expressed or implied is given other than those required by Commonwealth or State Legislation. The owner, his representative or the contractor is responsible for checking the suitability of products for their intended use.

Safety Precautions

These products may cause allergic reactions through skin contact, goggles, protective gloves and overalls must be worn. Ensure that there is adequate ventilation and avoid breathing the vapour.

Exclusion Clause

- The information contained in this data sheet is based on many years experience and is correct to the best of our knowledge. **ATECH®** will be under no liability whatsoever whether in:
 - Contract or tort (including, without limitation, negligence)
 - Breach of statute
 - Any other legal or equitable obligation other than the quality of the product at the time of despatch.
- Any queries about specification use or application should be directed to our technical service department immediately.
- This exclusion clause does not operate to exclude any warranty that by law may not be excluded.

