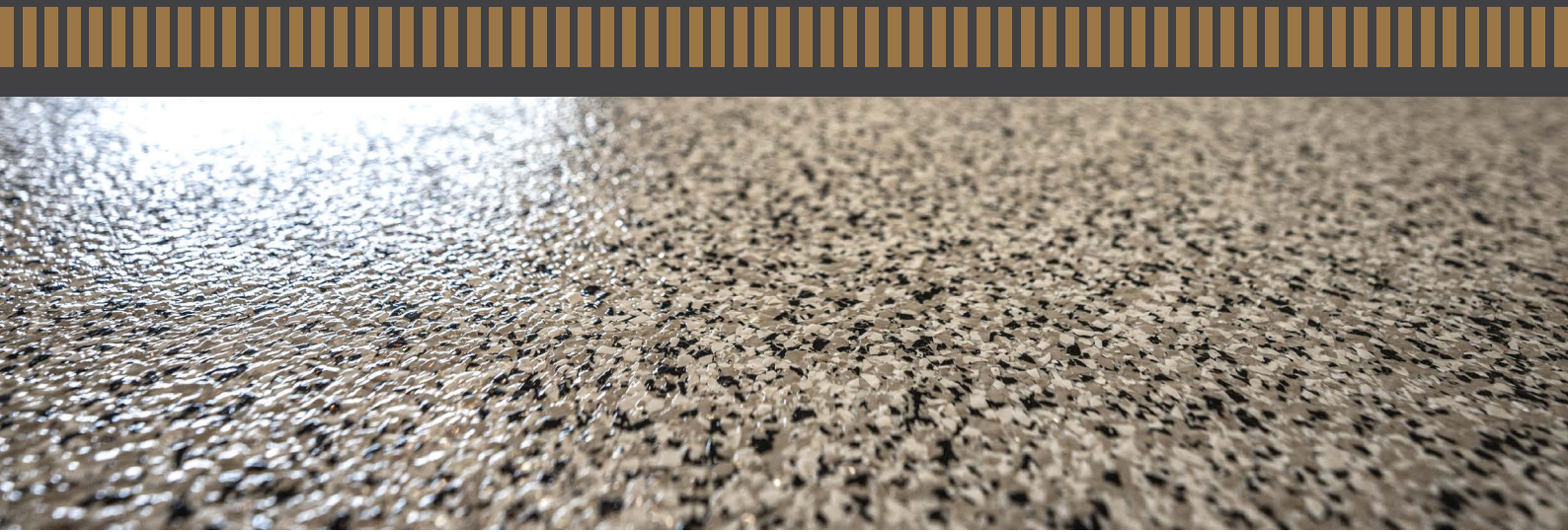


# EPOFLOOR® LEVELLER/VERTICAL

PIGMENTED EPOXY COATING, SELF LEVEL (H) OR THIXOTROPIC (V)



**EPOFLOOR® LEVELLER / VERTICAL** is a 100% solids epoxy coating designed as a high build coating for sealing trowelled epoxy finishes and spread and sprinkle floors, or as a roll-on coating, applied by squeegee or roller.

**SOLVENT FREE // 100% SOLIDS // GOOD CHEMICAL RESISTANCE // FAST CURE**

## MAJOR APPLICATIONS

- Workshop floors.
- Food factories and other hygienic related industries.
- Maintenance coating.

## MIXING & WORK TIME

Resin and hardener need to be mixed according to the ratios designated on the container label. Mix only the quantity of product that can be applied within the work life of the product. The work life is temperature dependent and will halve with an increase of 10°C and double with a decrease of 10°C. Leaving the mixed product in the mixing container will reduce the work time and shorten the cure time due to heat build up in the mixed product.

## SURFACE PREPARATION

The existing surface needs to be free of fats, oils, curing agents, surface laitence and other recognizable contaminants. Shot blasting or diamond grinding are the preferred techniques. The finished prepared surface must have tensile shear strength capable of absorbing the shear stresses applied by the epoxy topping as a result of thermal movement. The German standard (DIN 1048 part 2) measures this property and a result of minimum 2 MPa is expected from properly prepared surfaces. Moisture content of the substrate should be below 4%, in order to avoid osmotic blistering.

New concrete must be allowed to cure for at least 28 days. It imparts a satin finish.



# PRODUCT DATA SHEET: EPOXY COATINGS: EPOFLOOR® LEVELLER/VERTICAL

## APPLICATION AND COVERAGE

The colour pack is first added to Part A (Resin Component) and mixed thoroughly till uniform. Then, the hardener is added to the resin component and mixed with a mechanical stirrer for a minimum of 3 minutes. The mixed components are poured on the floor in a thin line and spread with a quality roller suitable for gloss paints. Low cost rollers are not suitable as the tacky consistency of epoxy coatings will lead to fluff entrapment. If insufficient labour is available to spread the mixed coating the kits should be proportioned according to the directions on the label. Epoxy solvent may be added to thin the coating where conditions allow. Application by squeegee is also widely used.

### \*FAST CURE OPTION

A fast curing hardener may be used with **EPOFLOOR® LEVELLER/VERTICAL** which will reduce the cure time to approximately half the standard system. Note though, EPOFLOOR® RAPID may not necessarily give the same gloss/finish as the conventional **EPOFLOOR® LEVELLER/VERTICAL** hardener.

## ENVIRONMENTAL HAZARDS & CONDITIONS

The presence of surface water, humidity and temperature can drastically affect the quality of any epoxy finish. Products should be applied as near to 20°C as possible. Humidity should be below 80% to prevent surface water spotting due to condensation. Rising temperatures can cause surface bubbling, product should be applied when the surface is cooling.

## TYPICAL PROPERTIES AT 25°C

	Standard Hardener	RAPID
Pot Life	20 minutes	15 minutes
Tack Free Time	8 hours	3 hours
Recoat Time	8 - 24 hours	3 - 24 hours
Application Temp	10 - 30°C	10 - 30°C
Cure Time Light Foot Traffic	24 hours	6 hours
Light Mechanical Traffic	3 days	24 hours
Full Cure	7 days	7 days
Hardness Shore D - 7 Days	78	78
Compressive Strength	75 MPa	75 MPa

## PACKAGING

	EPOFLOOR® LEVELLER	EPOFLOOR® VERTICAL
Part A	14kg or 8.7 Litre	5.5kg or 4.0 Litre
Part B	4.2kg or 4 Litre	2.1kg or 2.0 Litre
Colour Pack	1 Litre	500ml

## RAPID - 20 LITRE

Mixing Ratios Leveller	Standard Hardener	RAPID
Part A Resin Neutral	14kg or 8.7 L	14kg or 8.7 L
Color Pack (weight will vary with colour)	1L	1L
Hardener	4.2kg or 4 L	3.4kg or 3.4 L
Filler	Upto 15kg (if applying as base for broadcasting)	15kg (when used as base layer)
Mixing Ratio with Color Pack Resin : Hardener by Volume	2.43 : 1	2.85 : 1

Mixing Ratios Vertical	Standard Hardener	RAPID
Part A Resin Neutral	5.5kg or 4.0 L	5.5kg or 4.0 L
Color Pack (weight will vary with colour)	500mL	500mL
Hardener	2.1kg or 2.0 L	1.7kg or 1.7 L
Mixing Ratio with Color Pack Resin : Hardener by Volume	2.25 : 1	2.65 : 1

### Field Support

Field support where provided, does not constitute supervisory responsibility. Suggestions made by **ATECH®** either verbally or in writing may be followed, modified or rejected by the owner, engineer or contractor since they and not **ATECH®** are responsible for carrying out procedures appropriate to a specific application.

### Customer Responsibility

The technical information and application advice given in this publication is based on the best information available at time of print. As the information herein is of a general nature, no assumption can be made as to the products suitability for a particular use or application and no warranty as to its accuracy, reliability or completeness either expressed or implied is given other than those required by Commonwealth or State Legislation. The owner, his representative or the contractor is responsible for checking the suitability of products for their intended use.

### Safety Precautions

These products may cause allergic reactions through skin contact, goggles, protective gloves and overalls must be worn. Ensure that there is adequate ventilation and avoid breathing the vapour.

### Exclusion Clause

- The information contained in this data sheet is based on many years experience and is correct to the best of our knowledge. **ATECH®** will be under no liability whatsoever whether in:
  - Contract or tort (including, without limitation, negligence)
  - Breach of statute
  - Any other legal or equitable obligation other than the quality of the product at the time of despatch.
- Any queries about specification use or application should be directed to our technical service department immediately.
- This exclusion clause does not operate to exclude any warranty that by law may not be excluded.



Atech Products Pty Ltd  
 PO Box 3119 Burnley North VIC 3121  
 T . +61 3 9028 4265 E. sales@atechproducts.com.au  
[atechproducts.com.au](http://atechproducts.com.au)