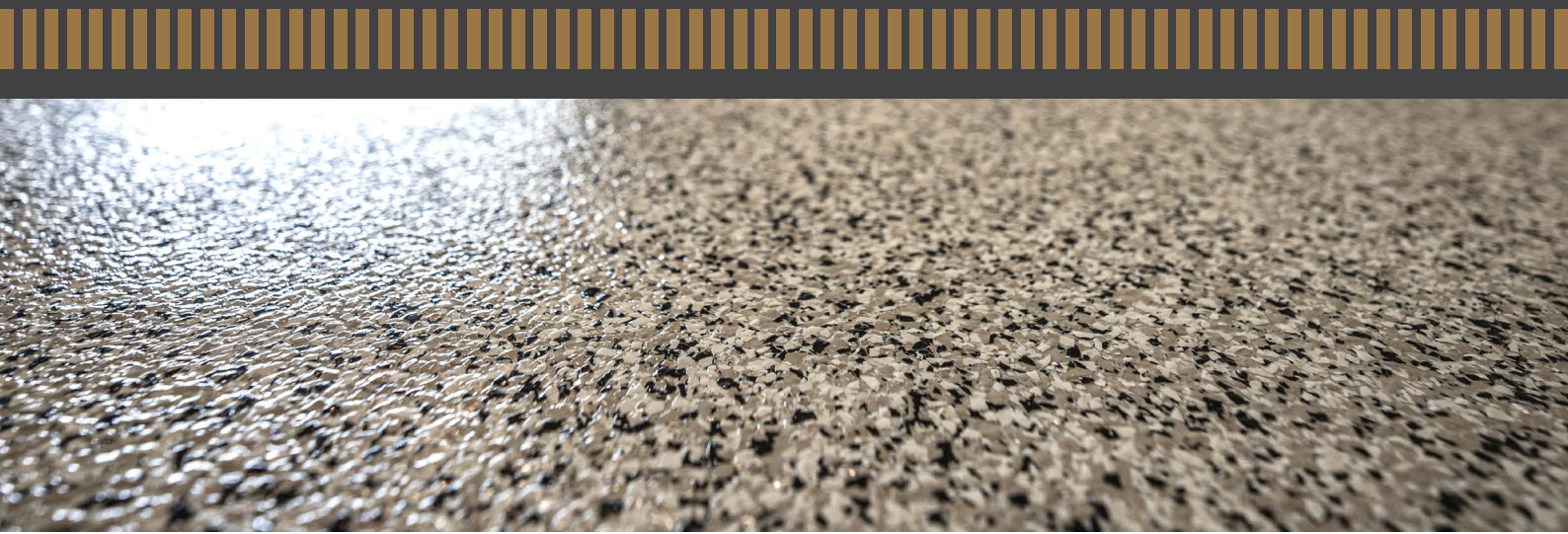


UFLOOR® SPARTIC

UV RESISTANT POLYASPARTIC CLEAR COATING



UFLOOR® SPARTIC is a highly versatile polyaspartic product utilising the latest premium technology. It comprises of a 2 component aliphatic technology delivering a durable protective coating with an excellent decorative finish and UV colour stability. It has excellent long term resistance to external weathering. **UFLOOR® SPARTIC** is rapid curing and has very low odour.

EASY TO APPLY // FAST CURING // ANTI-SLIP // LOW ODOUR // CHEMICAL AND STAIN RESISTANT

TYPICAL APPLICATIONS

- Ideal as a protective/decorative clear coat over ATECH epoxy coatings.
- As a top coat for most concrete and masonry finishes
- Factory, warehouse, garage, restaurant, retail and industrial floors.
- Drive ways, walk ways, corridors, steps, walls, balconies.
- Bonds to virtually all substrates including metals, wood, concrete and fibreglass.

Add suitable aggregate to conform to a range of slip resistance specifications.

PACKAGING

8 Litre or 40 Litre Kit.

STORAGE

12 months minimum, when stored in cool, dry, original unopened containers in conditions below 25°C.

PRECAUTIONS

Wear gloves, eye protection, mask and overalls during mixing and application. Ensure there is adequate ventilation and avoid breathing the vapour. The pot-life is approximately 20 minutes but is longer if the initial viscosity is lower. Discard any leftover mixed material after this time. Do not re-seal mixed product as pressure build up may occur.

For safety see the Material Safety Data Sheets.

Actual cure times will be dependent on climatic conditions including air temperature, relative humidity and air movement.



PRODUCT DATA SHEET: EPOXY COATINGS: UFLOOR® SPARTIC

Technical Properties	
Active Ingredients	2 component polyaspartic (aliphatic polyurea)
Gloss Level	Gloss
Colour	Clear
Mixing Ratio	1:1 by weight
Solids Content (Mixed)	85%
Pot Life	20 minutes
Touch Dry	Touch dry 3 hours Foot traffic 3–4 hours
Re-Coat	Within 6 hours
Full Cure	24–36 hours
Density	1.06
Application Temperature	2°C – 25°C
Odour	Low
Spread Rate	5–10m ² per litre

SURFACE PREPARATION

SURFACE PREPARATION ON CONCRETE

Surface must be clean and sound, free from oils, dust, chalk mildew and any other contaminants. If any of these are present then remove accordingly, either by scraping, sanding or power washing. Mildew must be removed with an appropriate solution.

Further preparation such as, grinding, shot blasting are essential for optimum adhesion.

An appropriate primer should be used prior application of **UFLOOR® SPARTIC**. When applying **UFLOOR® SPARTIC** over an existing new or old epoxy, it is recommended to abrade the surface slightly to reduce surface gloss and ensure not only adhesion but surface finish quality as “surface tension” can sometimes be an issue.

SURFACE PREPARATION ON TIMBER, PLASTIC OR METAL SUBSTRATES

Please contact ATECH® technical department for advice.

PRE-CONDITIONING PRODUCT

It is important to note that even when the application environment is warm, products which have been stored in cold or cooler conditions should always be pre-conditioned ideally to 20–25°C to ease mixing, application and help avoid other potential issues such as amine bloom or blushing.

APPLICATION

Applying a cold product in a warm environment is not recommended.

- By roller, brush or spray.
- High humidity will reduce drying time and curing rate.
- Ensure adequate air movement.
- Clean up – Xylene.

ENVIRONMENTAL CONDITIONS

Temperature and the surrounding atmospheric conditions will play a part in the curing process of all epoxy products. Under conditions of low temperatures and high humidity the final cured surface finish can be adversely affected potentially resulting in poor gloss retention, discolouration over time, poor overcoatability and intercoat adhesion. Quite often these conditions will result in the formation of a white film over the surface often evident after contact with water. This chemical reaction with the atmosphere is commonly referred to as “amine bloom” or “amine blush”. If this occurs then the existing coating will need to be abraded to completely remove the affected surface to ensure the adhesion of subsequent applications. In some cases partial or complete re-priming may be necessary.

Attention also needs to be paid to the substrate temperature which should be at least 3°C and preferably 5°C above the dew point during the curing phase. Industry standards recommend the accurate recording of times and dates, batch numbers, consumption rates and environmental conditions including substrate and air temperatures, humidity levels and dew point readings during both the application and curing processes. Full material warranties cannot be provided unless all the relevant data has been recorded accurately.

If in doubt consult the ATECH® technical department for advice.

Field Support

Field support where provided, does not constitute supervisory responsibility. Suggestions made by ATECH® either verbally or in writing may be followed, modified or rejected by the owner, engineer or contractor since they and not ATECH® are responsible for carrying out procedures appropriate to a specific application.

Customer Responsibility

The technical information and application advice given in this publication is based on the best information available at time of print. As the information herein is of a general nature, no assumption can be made as to the products suitability for a particular use or application and no warranty as to its accuracy, reliability or completeness either expressed or implied is given other than those required by Commonwealth or State Legislation. The owner, his representative or the contractor is responsible for checking the suitability of products for their intended use.

Safety Precautions

These products may cause allergic reactions through skin contact, goggles, protective gloves and overalls must be worn. Ensure that there is adequate ventilation and avoid breathing the vapour.

Exclusion Clause

1. The information contained in this data sheet is based on many years experience and is correct to the best of our knowledge. ATECH® will be under no liability whatsoever whether in:
 - a) Contract or tort (including, without limitation, negligence)
 - b) Breach of statute
 - c) Any other legal or equitable obligation other than the quality of the product at the time of despatch.
2. Any queries about specification use or application should be directed to our technical service department immediately.
3. This exclusion clause does not operate to exclude any warranty that by law may not be excluded.



Atech Products Pty Ltd
PO Box 3119 Burnley North VIC 3121
T . +61 3 9028 4265 E. sales@atechproducts.com.au
atechproducts.com.au